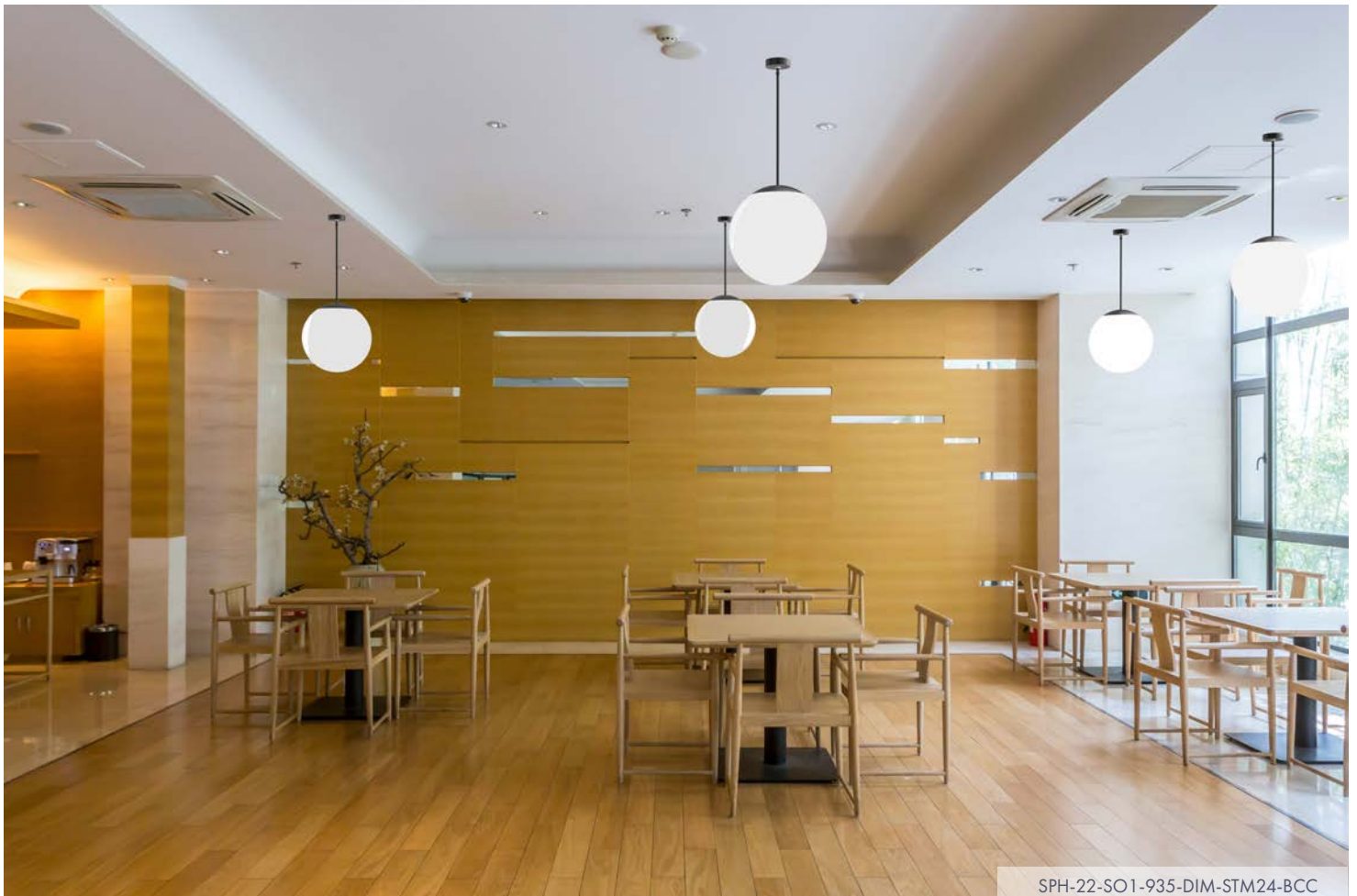


Illuminated spheres



**Features**

- Sizes: 10", 12", 16" 18" and 22" spheres
- Efficacy: 91 delivered lumens per watt
- Collar: Formed aluminum
- Lens: Transmissive, frosted acrylic
- Mounting: Suspension, surface
- Driver: In Canopy or remote
- Certification: UL listed for damp location use
- Warranty: 5-year limited warranty
- Photometry: ITL Boulder photometric report and IES files on the website



SPH-22-SO1-935-DIM-STM24-BCC

Project: \_\_\_\_\_ Type: \_\_\_\_\_ Date: \_\_\_\_\_

Order: \_\_\_\_\_

**Order Guide**

Order Example: SPH - 18 - S02 - 935 - DIM - BLK - SPC - BCC



Lens Ø"		Lumen Output	LED	Driver	Mounting												
		p.3	p.3	p.3	p.3-4												
<b>10</b>	Standard Output (all sizes)	<b>S01</b> 1,336 LM <b>S02</b> 1,872 LM <b>S03</b> 2,557 LM	Static White LED CRI   CCT <b>830</b> CRI >80 3000°K <b>835</b> CRI >80 3500°K <b>840</b> CRI >80 4000°K <b>930</b> CRI >90 3000°K <b>935</b> CRI >90 3500°K <b>940</b> CRI >90 4000°K	<b>DIM</b> 0-10V/1% <b>DIM-.1</b> 0-10 V/.1% <b>TRC</b> TRIAC/ELV <b>DAL</b> DALI  Drivers are rated 120-277 VAC	Pendant <b>SPC</b> single point canopies <b>STMX</b> Ø 1/2" rigid stem X= length" (specify length) <b>CCN</b> custom canopy suspension  Surface <b>CMT</b> ceiling   wall mount												
<b>12</b>																	
<b>16</b>																	
<b>18</b>																	
<b>22</b>																	
High Output (18" & 22" only)		<b>HO1</b> 3,211 LM <b>HO2</b> 4,029 LM	<b>TW</b> tunable white 2700-6500°K  <b>WD</b> warm dim 2200-3500°K														
<table border="1"> <thead> <tr> <th>Sphere Ø (in.)</th> <th>Max Weight (lbs)</th> </tr> </thead> <tbody> <tr> <td>10"</td> <td>6</td> </tr> <tr> <td>12"</td> <td>7</td> </tr> <tr> <td>16"</td> <td>9</td> </tr> <tr> <td>18"</td> <td>10</td> </tr> <tr> <td>22"</td> <td>12</td> </tr> </tbody> </table>		Sphere Ø (in.)	Max Weight (lbs)	10"	6	12"	7	16"	9	18"	10	22"	12	<b>MD</b> modify lumens (consult factory)	Red, Green, Blue + White LED <b>RGBW30</b> RGBW + 3000°K <b>RGBW35</b> RGBW + 3500°K <b>RGBW40</b> RGBW + 4000°K		
Sphere Ø (in.)	Max Weight (lbs)																
10"	6																
12"	7																
16"	9																
18"	10																
22"	12																

Options   Canopies	Collar and Stem Finish	Canopy   Cord Finish															
p.5	p.6	p.6															
<b>RMT</b> remote driver <b>BBU</b> battery backup	Powder Coat <b>WHT</b> matte white <b>BLK</b> matte black <b>ASL</b> anodized silver <b>GRY</b> matte gray (RAL 7035) <b>RAL</b> RAL code (specify) <b>CCL</b> custom color (provide chip)	<table border="1"> <thead> <tr> <th>Standard</th> <th>Canopy</th> <th>Cord</th> </tr> </thead> <tbody> <tr> <td><b>WCC</b></td> <td>white</td> <td>white</td> </tr> <tr> <td><b>BCC</b></td> <td>black</td> <td>black</td> </tr> <tr> <td><b>SCC</b></td> <td>silver</td> <td>silver</td> </tr> <tr> <td><b>MBC</b></td> <td>white</td> <td>silver</td> </tr> </tbody> </table> RAL Color <b>RCW</b> RAL color white <b>RCB</b> RAL color black <b>RCS</b> RAL color silver  Custom Color (CCL) <b>CCW</b> CCL color white <b>CCB</b> CCL color black <b>CCS</b> CCL color silver	Standard	Canopy	Cord	<b>WCC</b>	white	white	<b>BCC</b>	black	black	<b>SCC</b>	silver	silver	<b>MBC</b>	white	silver
Standard	Canopy	Cord															
<b>WCC</b>	white	white															
<b>BCC</b>	black	black															
<b>SCC</b>	silver	silver															
<b>MBC</b>	white	silver															